



UNIVERSITY OF
BIRMINGHAM
UK | DUBAI

A GAME-CHANGING DESTINATION

SPORTS EVENTS, CONFERENCES, ACCOMMODATION



A wide-angle photograph of the University of Birmingham's main building, a grand red-brick structure with multiple domes and arched windows. The scene is captured at sunset, with a warm, golden light illuminating the building and the sky. In the foreground, there are green lawns, a paved walkway, and several trees with bright yellow autumn foliage. A few black lampposts are visible along the path. The overall atmosphere is serene and majestic.

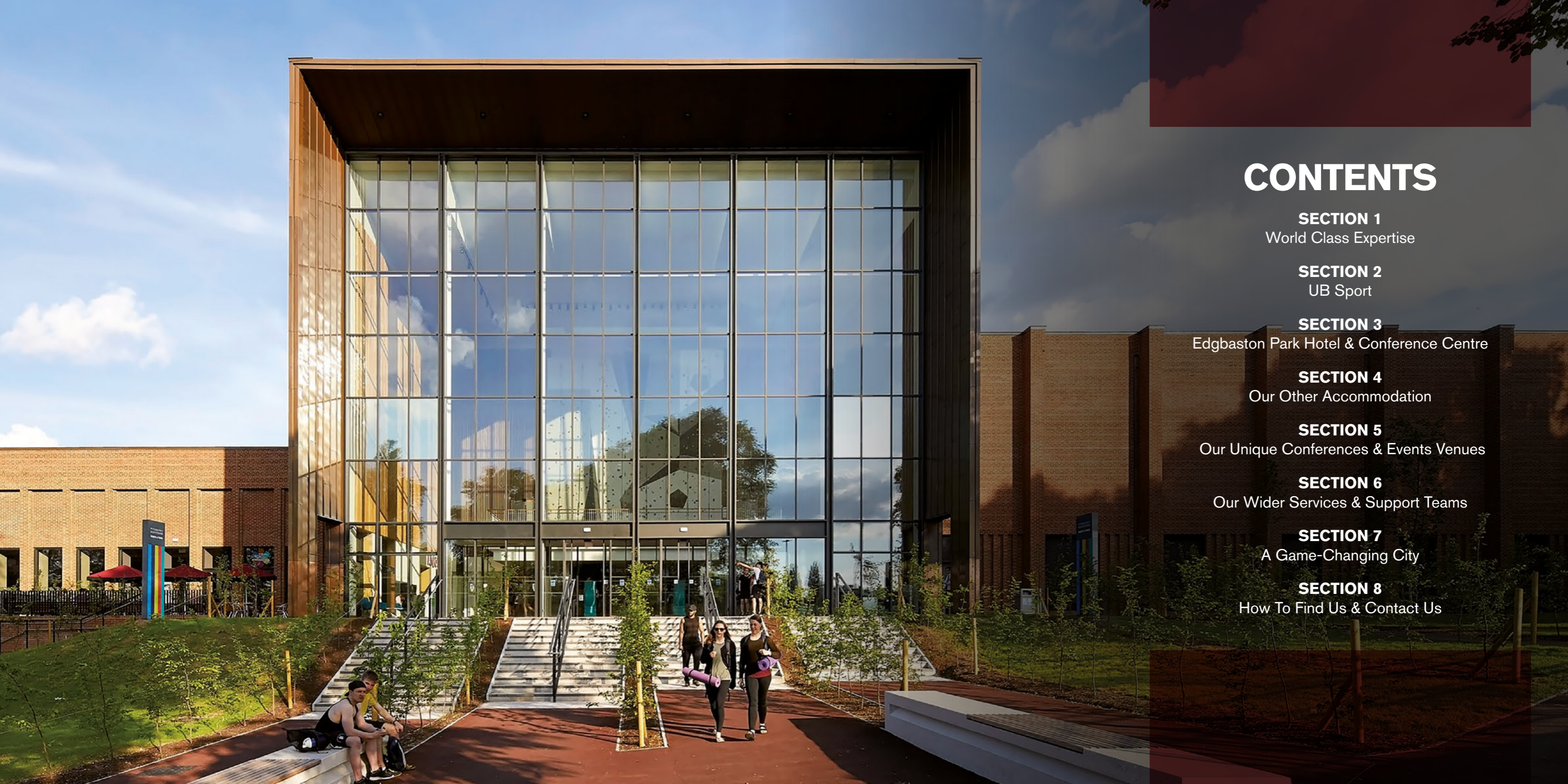
INTRODUCTION

Welcome! At the University of Birmingham, world-class sport, iconic conference facilities and accommodation combine to make one of the UK's best event destinations.

Founded in 1900 as the first civic university for the city of Birmingham, we now welcome more than 35,000 students from across the world. They enjoy a broad range of courses at our exceptional campus, plus fantastic sports and research facilities.

Our events experts can provide the full package for game-changing sports events or training camps, as well as meeting your wider conference needs. We are committed to developing long-lasting relationships as we become your strategic partner.

Get in touch with us to discuss your requirements and arrange a bespoke tour.



CONTENTS

SECTION 1

World Class Expertise

SECTION 2

UB Sport

SECTION 3

Edgbaston Park Hotel & Conference Centre

SECTION 4

Our Other Accommodation

SECTION 5

Our Unique Conferences & Events Venues

SECTION 6

Our Wider Services & Support Teams

SECTION 7

A Game-Changing City

SECTION 8

How To Find Us & Contact Us

WORLD CLASS EXPERTISE

We are experts at staging incredible events. The University of Birmingham is accustomed to the spotlight, whether we're hosting the London 2012 training camps or staging the BBC's Prime Ministerial Debate.

As part of the Birmingham 2022 Commonwealth Games, we had the privilege of being the official competition venue for the hockey and squash competitions.

At Games time, we welcomed over 190,000 spectators across the 11 days, hosted the main athletes' village, provided over 270,000 meals for 3,500 athletes, officials, Games family and workforce, and we were an official training venue for athletics and swimming.

Our award-winning events team has a wealth of experience working across the sports sector, including national governing bodies, professional sports clubs, rights holders, agencies and suppliers. On-site accommodation and state-of-the-art facilities, coupled with a central location and unrivalled connectivity, make the University of Birmingham your destination of choice.





UB SPORT

We are proud of our fully-accessible sports facilities, having invested over £65 million since 2017. They include everything from high-performance training venues, a 50m pool and state-of-the-art gym, to free recreation areas.

Our Graduate School of Sport and Professional Practice is at the forefront of our Applied Research, and seeks to develop high-performing, impactful people. Your athletes can be supported by our dedicated staff teams and our Performance Centre leads the way in higher education sports exercise and rehabilitation science.

"UB Sport facilities provided the perfect environment to host the GAPS training camps. They were a huge success and became the talk of the Games. Thanks to all the staff and management who worked with us to deliver so successfully".

Chris Jenkins, Vice President of the Commonwealth Games Federation (CGF)

SPORT FACILITIES

SPORT & FITNESS

Our Sport & Fitness building includes Birmingham's first 50m pool, an accessible and inclusive performance gym, climbing wall, and multiple sports halls. The 2000m² Munrow arena has a semi-sprung wooden floor and bleacher seating for over 750 spectators.

SQUASH COURTS

Our six glass back wall squash courts offer one of the best squash experiences in Birmingham. Three of them are show courts with 200 spectator seats and another is a smart interactive squash court. Three of the courts also have the ability to be converted into two international standard doubles courts.

BOURNBROOK 3G PITCH

Bournbrook comprises a range of FA-certified 3G pitches which have staged a variety of national and international sports. It is located next to the Bournbrook Pavilion, with its accessible changing facilities.

HOCKEY, TENNIS & NETBALL

There are 10 outdoor netball/tennis courts plus two FIH certified water-based hockey pitches opposite the Sport & Fitness centre.

ATHLETICS TRACK & METCHLEY GRASS PITCHES

Our international standard 400m athletics training track is fully floodlit, has eight lanes and a full range of throws and jumps areas.

There are 50 acres of grass pitches on campus, suitable for football, rugby and American football.





SCHOOL OF *SPORT, EXERCISE & REHABILITATION SCIENCES*

SCHOOL OF SPORT & EXERCISE AND REHABILITATION SCIENCES (SPORTEXR)

Our School of Sport, Exercise and Rehabilitation Science is globally renowned, ranking 7th in the world. It finds new ways to understand and support the sporting needs of individuals; from children to the elderly; and from elite athletes to people recovering from injury or living with chronic disease.

Academic staff working in this research area are investigating ways to optimise engagement with sport and enhance sports performance. We have a long-standing global reputation in sports psychology, complemented by world-leading multidisciplinary expertise across physical education, coaching, physiology, nutrition and applied sports science. Key high-performance services include: strength and conditioning, physiology, psychology, nutrition, lifestyle support, partnerships, physiotherapy, workshops and courses, as well as clean sport.

"The staff are really helpful and went above and beyond to help us".

English Institute of Sport (EIS)

An aerial photograph of a university campus. In the foreground, there are several large, modern, curved buildings with a brick and concrete facade. A large, calm lake is situated in the middle ground, reflecting the surrounding greenery. The background is filled with dense trees and more campus buildings, including a prominent tall, dark tower. The overall scene is lush and green, suggesting a peaceful and scenic environment.

EXPERIENCE A HOME FROM HOME

Our student accommodation provides the ideal environment to relax, unwind and focus on performance, with the ability to create an exclusive Athletes' Village or self-contained, high-performance training camp.

With over 5,000 ensuite rooms available, which were used as the Birmingham 2022 Games Village, we can cater for the needs of able-bodied and multiple para-sport athletes alike.

Available outside of term during July to September only, the Vale Village, Tennis Courts and Bournbrook Accommodation offer the perfect setting for sports events and conferences in peaceful and truly stunning surroundings.



EDGBASTON PARK HOTEL & CONFERENCE CENTRE

Our modern Edgbaston Park Hotel and Conference Centre benefits from a picturesque location, whilst also being only minutes from the city centre.

It is made up of a contemporary hotel building and two historic houses: Hornton Grange and Grade II-Listed Garth House. The hotel comprises 185 bedrooms and 3 serviced apartments. There is an open-plan 1900 Restaurant, Bar and Terrace, as well as numerous meeting spaces, catering for up to 250 delegates. Edgbaston Park Hotel sits outside the clean air zone and there is complimentary car parking.

"The hotel and its beautiful grounds made a perfect base for Team Wales, Welsh Government, our athletes, support staff, families and visiting media. The quality of the facilities and its brilliant staff made for an excellent experience by all".

Chris Jenkins, CEO Team Wales

EDGBASTON PARK HOTEL & CONFERENCE CENTRE



Led by an award-winning team, it's one of the best and greenest hotels in Birmingham – in more ways than one.

Edgbaston Park Hotel and Conference Centre recently received a gold accreditation for green meetings by Green Tourism, thanks to a range of successful initiatives to reduce emissions, water use and waste.

The hotel understands the needs and requirements of teams, athletes and major sport events. It became 'Team Wales House' during the Birmingham 2022 Commonwealth Games.

There are also many destinations of interest nearby including Edgbaston Cricket Stadium, Edgbaston Golf Club, Edgbaston Priory Tennis Centre and the Alexander Stadium.



EDGBASTON PARK HOTEL & CONFERENCE CENTRE ROOM CONFIGURATIONS

ROOM	BANQUETING	CABARET (BASED ON 6S)	CABARET (BASED ON 8S)	THEATRE	CLASSROOM (2 PER 6FT TABLE)	U-SHAPE	BOARDROOM	STANDING	EXHIBITIONS (BASED ON 4FT STANDS)	HORSESHOE (NO TABLES)
Fry	200 plated, 220 buffet, 190 stage, 180 dance floor	-	160	240	132	60	60	250	34	160
Fry Lounge	50	-	-	-	-	-	-	100	8	-
Pevsner	60	36	48	100	40	36	40	100	16	30
1900 Restaurant	112 (mixed size tables)	-	-	-	-	-	-	-	-	-
1900 Bar	62 (mixed size tables)	-	-	-	-	-	-	-	-	-
The Writers' Suite (Corelli, Lodge & MacNeice)	90	60	80	120	58	50	42	145	20	55
Corelli	40	18	24	50	24	24	20	50	5	20
Lodge	30	24	32	40	24	24	20	50	5	15
MacNeice	20	12	16	30	12	18	20	45	4	12
Corelli & Lodge	40	36	48	90	48	38	40	100	10	30
Lodge & MacNeice	40	36	48	70	36	32	18	95	10	20
The Composers' Suite (Bantock & Elgar)	60	48	64	80	48	40	18	100	16	15
Bantock	30	18	24	36	24	26	30	50	6	40
Elgar	30	24	32	40	24	24	30	50	6	40
HORNTON GRANGE										
Lloyd Suite	100	66	88	116	70	45	30	150	15	40
Medawar	-	-	-	-	-	-	12	-	-	-
GARTH HOUSE										
Barber	-	-	-	-	-	-	12	-	-	-
Lapworth	-	-	-	-	-	-	6	-	-	-
Winterbourne	-	-	-	-	-	-	12	-	-	-

PETER SCOTT HOUSE



Self-contained and just across the road from our hotel is Peter Scott House, an ideal base for bespoke sports training and holding camps.

Located within walking distance of our 400m international standard athletics track, it offers 36 ensuite twin bedrooms with business-friendly amenities and breakout rooms.

Peter Scott House's secluded location provides the ideal venue to enable athletes to focus on their preparations and performance in tranquillity.

One of the most comfortable and affordable accommodation offers on campus.

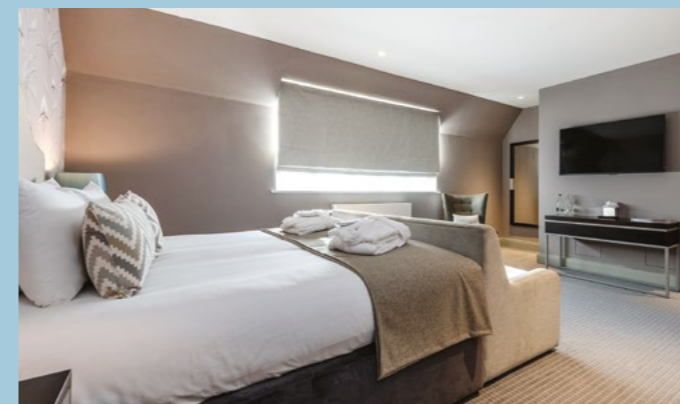


BOURNBROOK ACCOMMODATION & PAVILION

Bournbrook has contemporary ensuite rooms within walking distance of our 3G pitch, netball and tennis courts and two FIH Standard, water-based hockey pitches.

Close to the heart of campus, the 168-bed accommodation includes a variety of catering options available at Brook's Sports Bar & Kitchen.

There is a 24-hour reception, laundrette, shared kitchen lounge and quality housekeeping services, plus complimentary toiletries, bedding and towels.





OUR UNIQUE CONFERENCES & EVENTS VENUES

Our teams have a wealth of experience delivering a wide range of events, in some of the most spectacular and unusual spaces in Birmingham. Not only in the city centre, but also on our iconic campus, overseen by 'Old Joe', the world's largest free-standing clock tower.

Our venues are beautifully maintained and can be individually dressed for any occasion. You'll also be supported by our in-house audio-visual technical experts, providing that peace of mind for any bespoke requirements. We can also oversee your project management and event planning; leaving you free to concentrate on the event itself.

We are committed to a sustainable future, so our chefs create menus that are locally sourced, creatively prepared and perfectly served. Whether it's a one-day business meeting, a large-scale conference, dinner, awards night, major sports event, training camp or an exclusive private dining experience, our team of experts are here to help.

"A pleasure to work with. Every interaction was helpful, enthusiastic, efficient, and effective. We've been impressed with the reliability and professionalism of everyone, and we couldn't have done it without them".

Tim Lawler, CEO Sports Aid - Team England Futures programme at the Commonwealth Games.

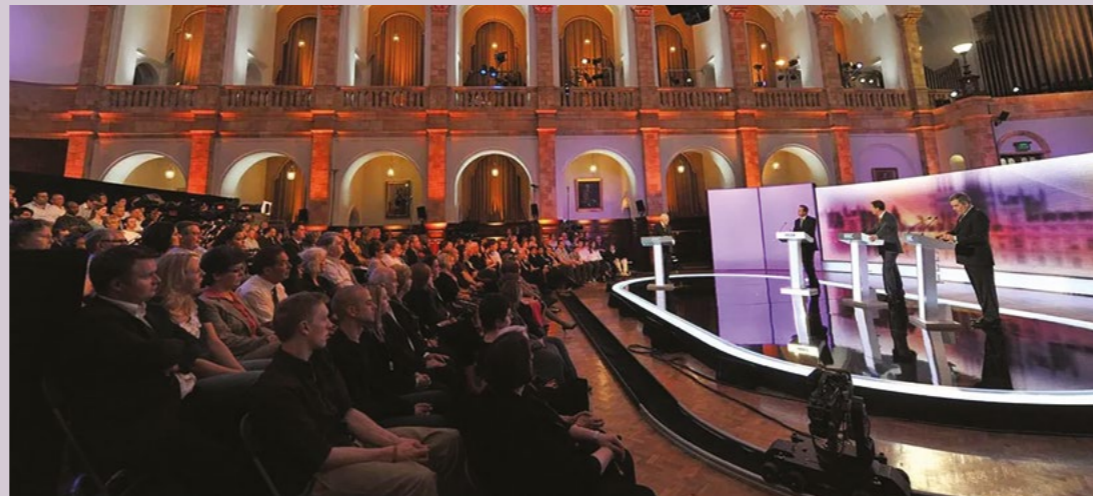


THE GREAT HALL & THE BRAMALL

Both of these venues are located in our stunning red-brick building, Aston Webb.

Originally built in 1900 as a 'cathedral for learning', with a marble rotunda foyer and stained-glass windows, the Great Hall has staged our degree ceremonies for over a century.

The Bramall Music Building houses the beautiful Elgar Concert Hall, a prestigious auditorium with seating for more than 400, finely-tuned acoustics, and the very latest sound and lighting technology.





GREEN HEART

Measuring over 12 acres, the Green Heart is a unique space for live performances, socialising and a place to meet outdoors.

There's boosted Wi-Fi throughout the area, plus plenty of room for outdoor catering options.

There are multiple marquee locations within Chancellor's Court, including our outdoor amphitheatre, which is licensed for 10,000 people.



THE TEACHING & LEARNING BUILDING

Opened in 2019, the Teaching and Learning Building is located at the heart of campus.

The facility provides state-of-the-art teaching and social study spaces to support the modern learning experience.

The building includes a 500-seat lecture theatre, a 250-seat interactive lecture theatre and 10 seminar rooms capable of seating 30 people each.



THE EXCHANGE

Steeped in history, The Exchange is perfectly located in the heart of Birmingham city centre, with rooms and spaces that are both modern and flexible in their design and layout.

The Exchange was once home to the city's first Municipal Bank and is today a hub for creativity, collaboration and celebration.

Retaining many of its unique period features, The Exchange's many rooms offer visitors the flexibility to transition from meetings and break-out discussions to press announcements, ceremonies, VIP receptions and formal dining.

It's easily accessible: a 10-minute walk from Birmingham New Street train station, a 20-minute drive from Birmingham Airport and has a Metro stop directly outside in Centenary Square. It also hosts an exhibition space and an optional licensed bar / café.

Take a 360-degree tour of The Exchange





EXPLORE OUR CULTURAL ASSETS

Lapworth Museum of Geology



The Barber Institute of Fine Arts



Winterbourne House and Garden



The University's long history of scientific, artistic and cultural achievement can be seen in a range of cultural attractions on campus.

Step back in time and explore seven acres of beautiful botanical gardens at Winterbourne House and Garden, have drinks with a dinosaur at the Lapworth Museum of Geology, or view masterpieces by Monet, Gainsborough and Renoir at the Barber Institute of Fine Arts.

Whether you're planning an awards dinner, a drinks reception or a relaxed barbecue, our experienced events team can help you choose the perfect venue.



CAMPUS MAP

- 1 Edgbaston Park Hotel & Conference Centre
- 2 University Train Station
- 3 Athletics Track
- 4 UB Sport & Fitness
- 5 Great Hall
- 6 The Bramall Building
- 7 The Teaching & Learning Building
- 8 School of Sport, Exercise & Rehabilitation Science
- 9 Lapworth Museum of Geology
- 10 The Barber Institute of Fine Arts
- 11 Winterbourne House & Garden
- 12 Green Heart
- 13 Athletes' Village
- 14 Bournbrook Accommodation & Pavilion
- 15 Peter Scott House
- 16 Bournbrook 3G Pitch
- 17 Hockey pitches
- 18 Tennis / Netball Courts
- 19 Metchley Grass Pitches
- 20 Brook's Sports Bar & Kitchen
- 21 The Vale Village
- 22 The Chamberlain





FOOD & BEVERAGE

With an expert team of chefs and 23 food and beverage outlets on campus, we are perfectly placed to cater for every aspect of your event.

From celebration fine dining and informal barbeques, to buffet breakfasts and drinks receptions, our hospitality offer is second to none. We know how vital a balanced diet is to athletes, so our chefs will go the extra mile to create dishes that satisfy the needs, dietary requirements and tastes of all customers.

OUR WIDER SERVICES & SUPPORT TEAMS

COMMUNITY SAFETY & SECURITY

We are fortunate to have a team of security experts for emergency planning and resilience management, as well as the Community Safety Team to offer help, support and advice at University of Birmingham. Our Security teams patrol our campus, respond to situations, man vehicle barriers and monitor activity via CCTV 24/7.

FACILITIES

From portering and cleaning, to housekeeping and waste management, we have a team of 400 employees responsible for the efficient running of the University.



SUSTAINABILITY

Future generations deserve the chance to live a happy, healthy life. As part of an educational organisation, we are committed to organising brilliant events which don't damage the planet.

The University has signed a commitment to be Net Zero Carbon by 2045 and our academics are leading world-class research which aims to deliver revolutionary transport, heat, waste and recycling solutions.

We try to live by our principles:

- University buildings are powered by electricity from renewable sources
 - Visitors, staff and students are encouraged to arrive by bike or via our very own University train station
- The University owns a fleet of electric and hydrogen fuel-cell vehicles
 - Electric bikes and scooters are available to hire
 - We encourage paper-free conferences
- Used coffee grounds from our events are recycled into biofuel 'coffee logs' and composted at Winterbourne House and Gardens
 - We sell reusable cups and bottles at most food and drink outlets on campus to cut down on single-use plastic
 - You'll find recycling bins in all areas
- The University owns a fleet of electric and hydrogen fuel-cell vehicles

Edgbaston Park Hotel now has a 'Gold' Green Meetings accreditation





A GAME-CHANGING CITY

Birmingham is one of the most accessible, fastest-growing and youngest cities in Europe. Among our one million-strong population, you'll discover vibrant cultures with people of over 190 nationalities calling it home.

Our campus is just minutes away from world-famous venues such as Edgbaston Cricket Stadium - home to Warwickshire County Cricket Club - and Edgbaston Priory Club, 'the birthplace of tennis'. Birmingham and the West Midlands region has played host to some of the largest global sporting events, including the Birmingham 2022 Commonwealth Games, Rugby League World Cup, Cricket World Cup, Rugby Union World Cup, World Indoor Athletics, the Ryder Cup and the Gymnastics World Cup.

Major sporting events are central to the growth of the visitor economy in our region, forecast to increase by almost £1.2bn by 2029. This creates a genuinely exciting opportunity to create a great place to visit and a healthier, happier, more prosperous region.

HOW TO FIND US

The University of Birmingham is in the heart of England, in south-west Birmingham, approximately 3 miles from the city centre.

By train - Local trains run from Birmingham New Street to University Station, a short walk from the centre of the campus.

By bus - Local buses run along the Bristol Road and Pritchatts Road.

Pay & Display - Northeast Car Park: 52 Pritchatts Road, B15 2SA
North Car Park: Pritchatts Road.

Free Parking - Available at the Northeast Car Park Multi Storey via Pritchatts Road during the evenings from 6pm onward and at weekends. At other times, pay via the Ringo app.



CONTACT US

Conferences & Events

☎ 0121 415 8400

🌐 info@conferences.bham.ac.uk

For further information please visit;

🌐 www.conferences.bham.ac.uk

🐦 UoBCandE

🌐 [UniversityofBirminghamConferenceandEvents](https://www.linkedin.com/company/UniversityofBirminghamConferenceandEvents)

📷 [uobconferences](https://www.instagram.com/uobconferences)